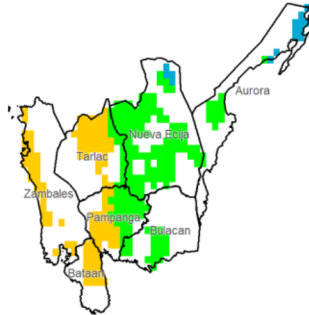


Region III (Central Luzon)

Water Availability for Rice
Prevailing Stage : None

Harvesting and/or
pre-planting
stage is possibly
ongoing.

Water Availability for Corn
Prevailing Stage : (II) Vegetative



Provincial Values

	Mon. Ave. Rainfall (mm)	Rice		Corn	
		CS CCI (%)	CS CCI (%)	CS CCI (%)	CS CCI (%)
Aurora	283.4	I	130.0	I	228.8
		II	121.9	II	175.6
		III	118.2	III	145.5
		IV	118.2	IV	174.0
Bataan	48.4	I	9.6	I	32.7
		II	8.3	II	18.1
		III	7.8	III	11.9
		IV	7.8	IV	17.7
Bulacan	138.9	I	47.3	I	89.6
		II	42.4	II	64.8
		III	40.3	III	47.6
		IV	40.3	IV	63.9
Nueva Ecija	215.0	I	76.1	I	139.2
		II	70.6	II	103.0
		III	68.1	III	83.0
		IV	68.1	IV	101.9
Pampanga	100.4	I	28.7	I	65.7
		II	25.7	II	44.2
		III	24.3	III	32.4
		IV	24.3	IV	43.5
Tarlac	115.7	I	28.4	I	59.0
		II	26.1	II	41.2
		III	25.1	III	32.3
		IV	25.1	IV	40.7
Zambales	72.1	I	14.1	I	30.2
		II	12.7	II	21.4
		III	12.1	III	16.7
		IV	12.1	IV	21.1

Crop Stage (CS) highlighted in black is the dominant stage during the month of November

Rice CS:
(I) Nursery
(II) Vegetative
(III) Reproductive
(IV) Ripening

Corn CS:
(I) Establishment
(II) Vegetative
(III) Reproductive
(IV) Maturity

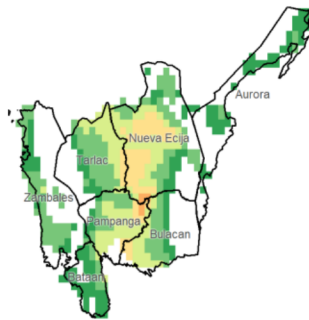
CCI Category:
Inadequate
Sufficient
Excess

Regional Summary

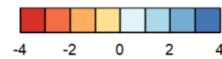
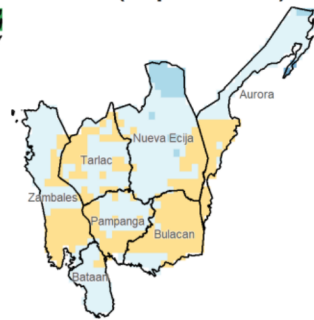
Aurora, Bulacan, and Nueva Ecija—provinces in Central Luzon—received sufficient rainfall to support corn crops at the prevailing vegetative stage. However, the other provinces in the region experienced inadequate rainfall for their corn crops. The NDVI maps indicated significant stress in vegetation especially in Nueva Ecija.

The three-month accumulated rainfall (SPEI3) map indicates generally normal conditions over the past three months. However, the heavy rainfall indices (RX1day and RX5day) reveal significant rainfall events, with RX1day showing a maximum 1-day rainfall of about 200 mm and RX5day showing a 5-day rainfall of around 300 mm. These conditions were likely caused by the passing of Typhoon Pepito, which made landfall near Aurora. This brought heavy rainfall, particularly to the northern portion of the region, potentially causing damage to standing corn crops.

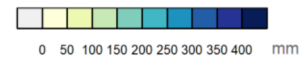
NDVI



SPEI3 (Sep-Oct-Nov)



RX1day



RX5day

